

The NSW Dementia Services Framework 2010 – 2015

19 May 2011

**Troy Speirs, Henry Brodaty & Anne Cumming
NSW Dementia Policy Team**

Overview

- Policy context
- Development of the Framework
- Framework release and promotion
- Implementation process
- Immediate strategies
- Opportunities and challenges

Policy context

● National Dementia Planning

- *National Framework for Action on Dementia 2006-2010*
- *National Dementia Pathways Project*

● NSW Dementia Planning

- *NSW Action Plan on Dementia 1996-2001*
- *Future Directions for Dementia Care & Support 2001-2006*
- *NSW Dementia Action Plan 2007-2009*
- *NSW Dementia Services Framework 2010-2015*

Development process

- **NSW Dementia Policy Team**
- **Dementia Planning Steering Committee**
- **Expert Advisory Group**
- **Review of relevant reports and articles**
- **Links with National Dementia Pathways Project**
- **Consultation workshops**
- **Written feedback on public draft**



Carer Consultations



Health

Service Provider Consultations



Consultation Feedback

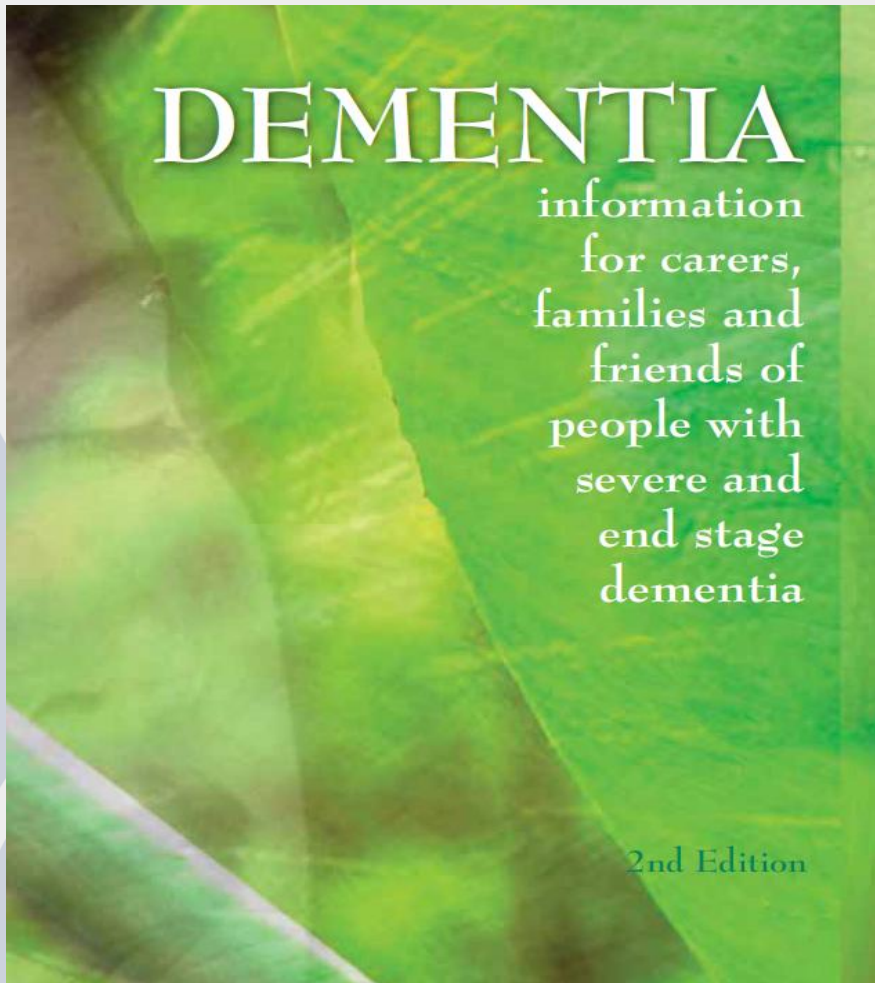
- **Supply vs demand for services**
- **Behavioural and psychological symptoms of dementia**
- **Lack of/delay in diagnosis**
- **Demand on dementia specific experts/services**
- **Geographic variation**
- **Poor care experiences**

Service pathway approach

From
community awareness
& risk reduction . . .



. . . to palliative care



Focus Areas

People living with dementia

Carers- support and wellbeing

Specific population groups

Service Pathways

Dementia awareness

Assessment, diagnosis and management

Counselling, information and carer education

Community care

Hospital care

Residential care

Behavioural and psychological support

Palliative care

Enablers

Funding structures, service planning, executive support, policy and coordination

Training and workforce development

Evidence

Framework states:

- Quality dementia care consists of integrated Commonwealth, NSW and jointly funded services and programs across health (primary, aged health, mental health), community, aged and residential care.
- Actions included within the Framework span across both national and state areas of responsibility.
- *The next stage for NSW under development is selecting recommendations that align with state responsibilities and the development of an implementation plan.*

Key priorities for NSW

- Increase the accessibility to dementia expertise in community
- Improve the identification, treatment and care of people with dementia and delirium in hospitals
- Build capacity and service integration in dementia care at state and local levels

Framework release and promotion

The NSW Dementia Services
Framework
2010 – 2015

- **Launched September 2010 in Dementia Awareness Week**
- **Joint publication NSW Health and ADHC**
- **www.health.nsw.gov.au**



Implementation

October - December 2010

- Prioritisation, collection of some base case data, business case development, establishment of implementation group

February - May 2011

- First draft of implementation plan submitted, development of evaluation framework, community dementia CNC allocation

Implementation continued

- Submit for budget consideration
- Establish expert advisory group
- Progress immediate strategies
- Integrate with other policy developments
- Communicate with stakeholders

Implementation process

Who?

- State Govt
Departments
- NSW Statewide Policy
Teams
- Local Health Districts
and ADHC regions
- Local Dementia
Networks
- Partners and
contracted projects

How?

- Investment
- Pilot
- Redesign
- Policy
- Planning

Immediate Strategies

- **Some examples**

- **Risk reduction**

- **Dementia expertise in the community**

- **Dementia expertise in hospitals**

Dementia Awareness



healthy heart
healthy mind

Reduce your risk of Dementia

Keep your blood pressure in check



healthy heart
healthy mind



Health
Illawarra Shoalhaven
Local Health Network



Health

Diagnosis, assessment and management - Community dementia CNCs

- Illawarra/Shoalhaven
- South West Sydney
- Western Sydney
- Northern Sydney
- Hunter/New England
- Murrumbidgee
- Northern NSW
- Western NSW

Hospital Dementia/Delirium CNCs



Research into practice: volunteers improving person centred dementia care in a rural hospital



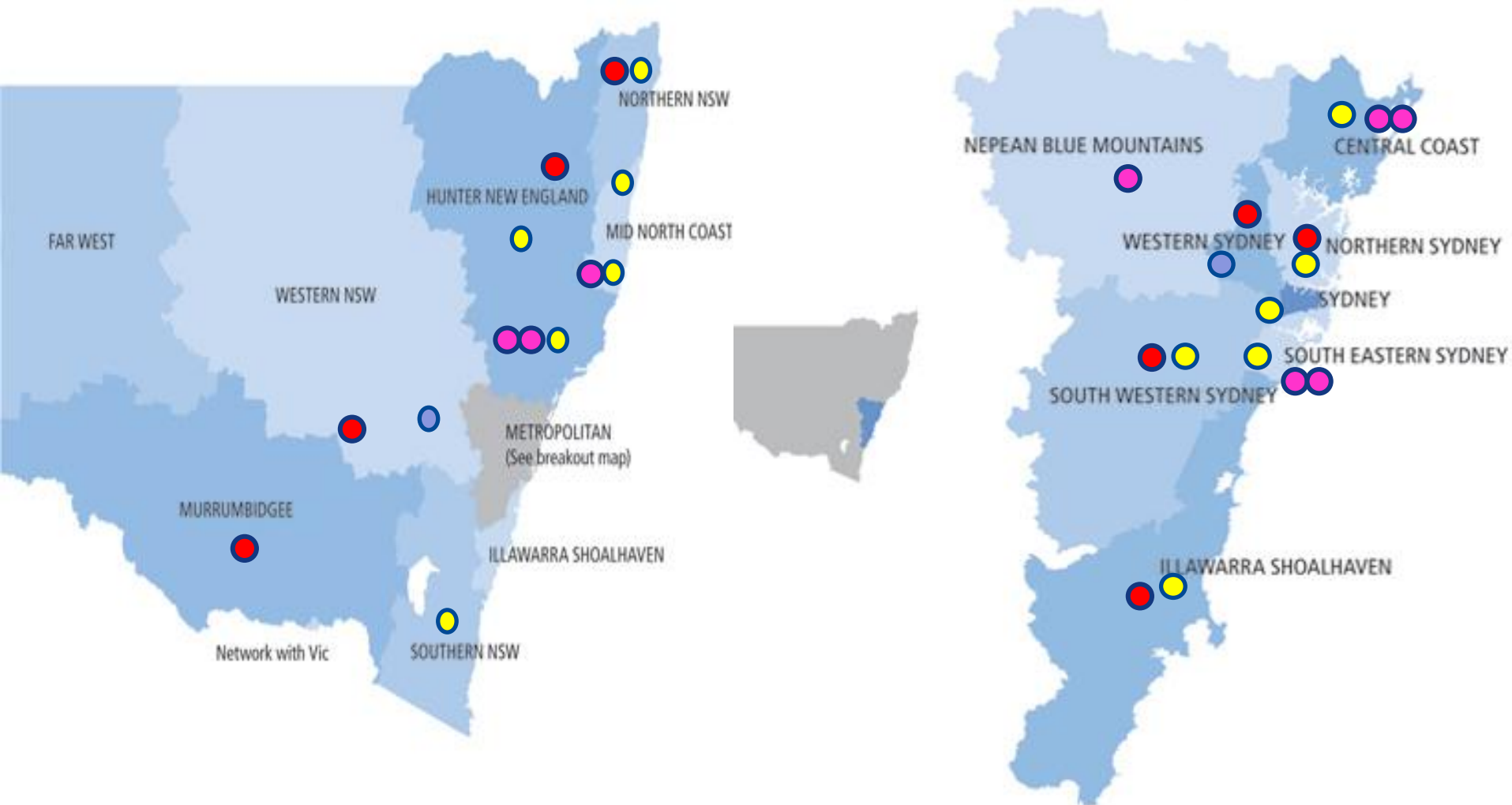
Cath Bateman Greater Southern Area Health Service, NSW
cath.bateman@gsahs.health.nsw.gov.au

The study aimed to establish and train a group of volunteers in a person centred care approach to supporting people with cognitive impairment and compare outcomes with a control hospital which did not have volunteers.

A prospective cohort study design was used. The dementia delirium hospital volunteer program intervention was established and implemented at Bega Hospital (Intervention), a 63 bed rural acute hospital. Patient and staff outcomes were compared simultaneously at Moruya Hospital (control) a 59 bed rural acute hospital which did not have the volunteer program. The outcomes of (n=64) patient participants who received the volunteer intervention over six months at Bega Hospital were analysed and compared to a control group of (n=52) participants at Moruya. Additional measures compared staff and volunteer dementia and delirium knowledge and attitudes to people with dementia and post program perception of the program by staff and volunteers at the intervention hospital.

Dementia CNC coverage in NSW

- Dementia/delirium CNCs
- Existing Community CNCs
- New Community CNCs



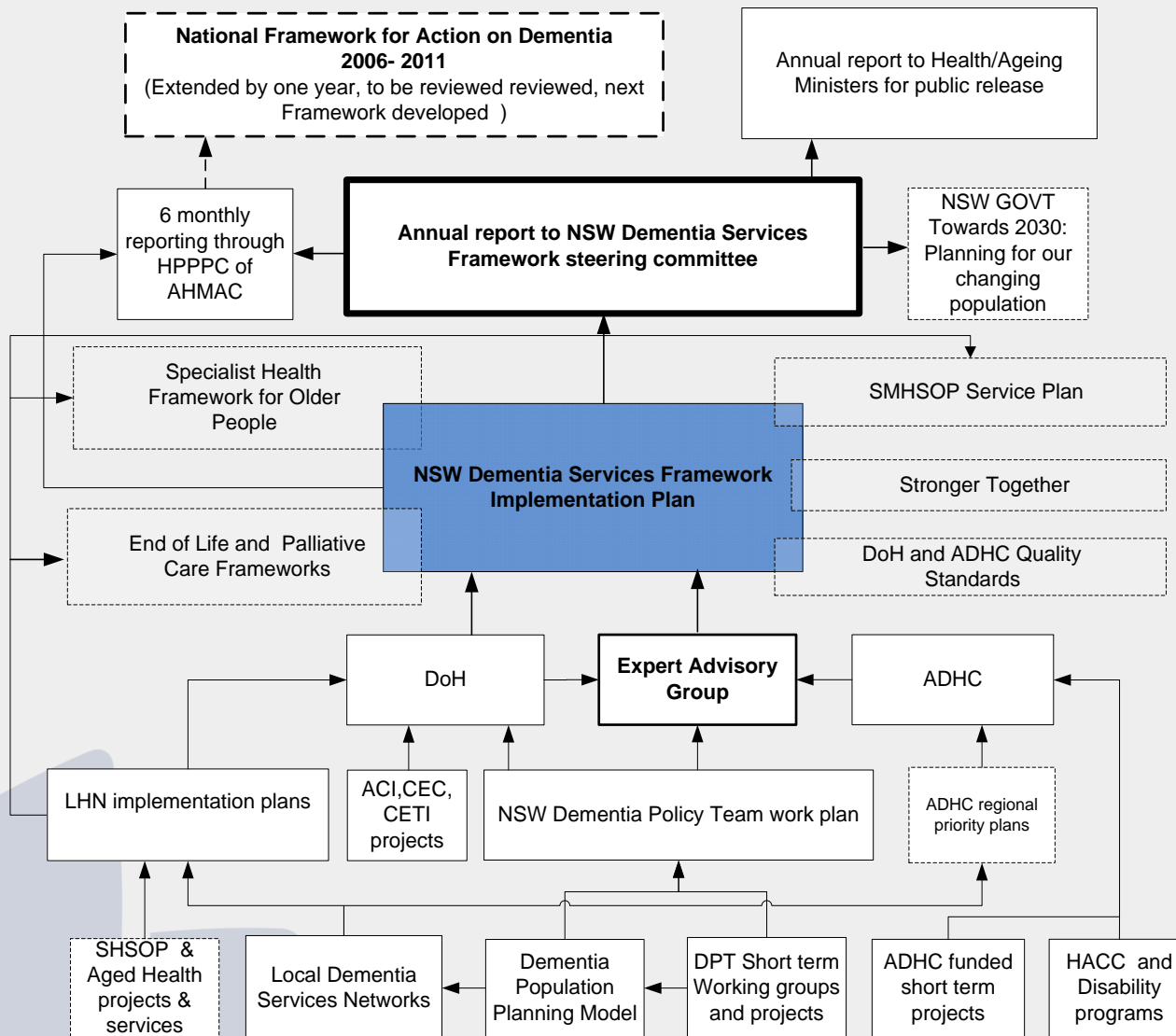
Immediate strategies – Enablers

Policy, Planning, Evidence

- Framework issued as a guideline
- Dementia Population Planning Model
- Evaluation framework

Education and Training

- Dementia e-learning
- Health Care Interpreter training
- *14 Essentials for Good Dementia Care in General Practice*



Proposed Governance



Health

Challenges

- **Funding opportunities**
- **National health and aged care reforms**
- **Scope of implementation plan**
- **Communication**
- **Relationship to other frameworks**

Thank you

troy.speirs@sesiahs.health.nsw.gov.au